

The City is providing a world class public transport system to get you to Soccer City and Ellis Park on time, safely and in style. All you have to do is decide if it's MetroRail, Rea Vaya BRT, Park & Walk or Park & Ride that will take you there.

USE THESE SIMPLE INSTRUCTIONS TO GUIDE YOU WHEN GETTING AROUND ON MATCH DAYS...

1. Identify which stadium you are going to.
2. Choose from these transport options:



A **PARK & WALK** allows you to park your car close to the stadiums and walk safely along a designated route to the stadium and back. **Prepaid ticket PRICE from R50 per car.**



A **PARK & RIDE** allows you to park your car close to the stadiums and be transported safely via shuttle service to the stadium and back. **Prepaid ticket PRICE from R50 per car.**



METRORAIL is the city's commuter train service operating between selected rail lines around the city. **If you have a match ticket your MetroRail trip to the stadium will be free of charge.**



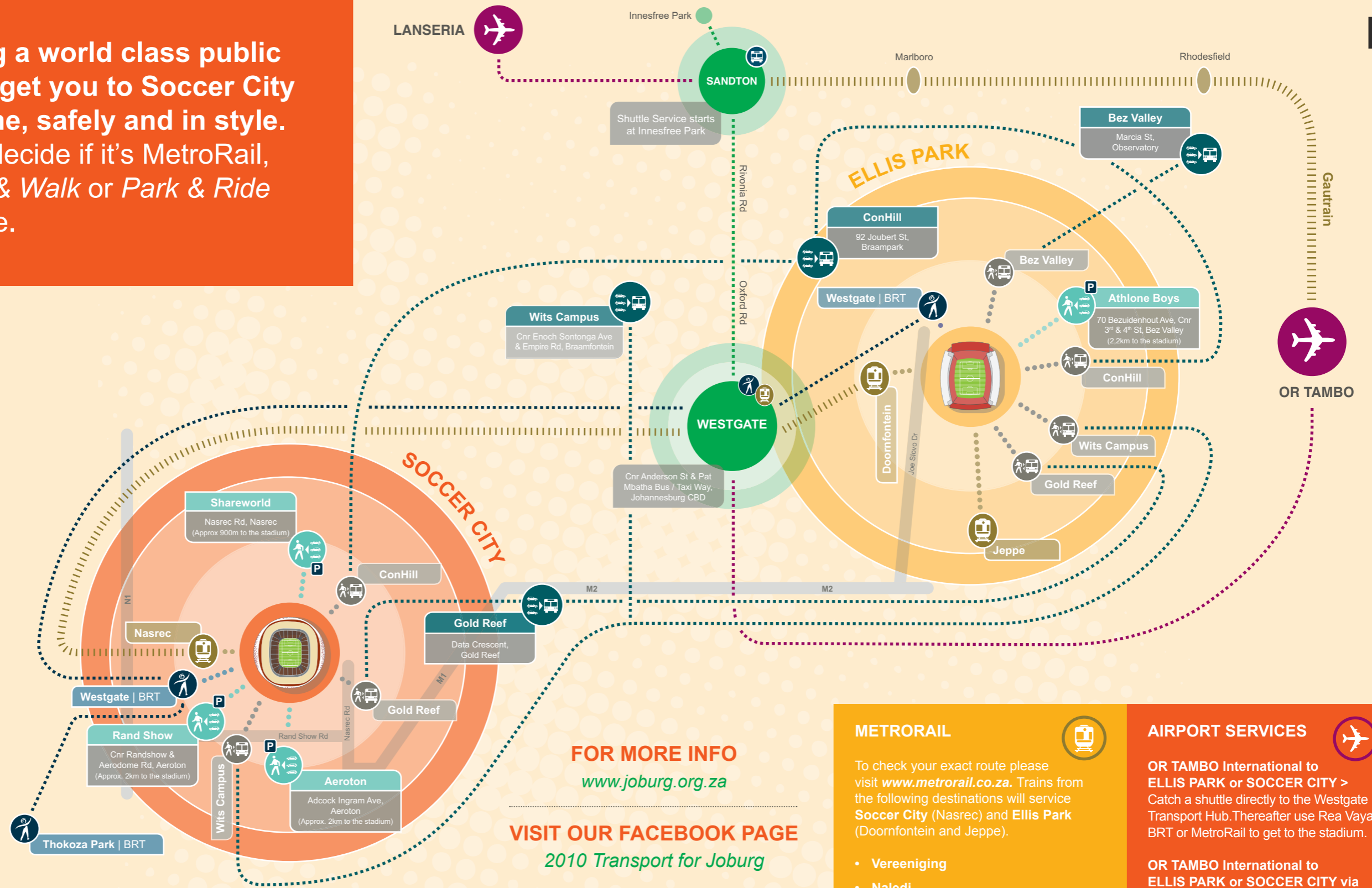
GAUTRAIN is Johannesburg's high speed rapid rail service operating between OR Tambo International Airport and Sandton. **Gautrain feeder buses R11. Gautrain train R100.**



REA VAYA BRT is a bus service that will transport fans from all Rea Vaya BRT Stations including The Westgate Transport Hub to the stadiums and back. **PRICE R12 return** Tickets can be bought from all Rea Vaya BRT stations.



The **SANDTON METROBUS TRANSPORT SERVICE** is a bus service operating between Sandton Transport Hub and Westgate Transport Hub on match days. **The PRICE is R20 for a one-way ticket, R40 for a return ticket and R50 for a return ticket plus Rea Vaya BRT connection to and from the stadium.**



FOR MORE INFO
www.joburg.org.za

VISIT OUR FACEBOOK PAGE
2010 Transport for Joburg

WESTGATE TRANSPORT HUB

The Westgate Transport Hub has both a Rea Vaya BRT and MetroRail Station serving the Ellis Park and Soccer City stadiums. There is a drop-off zone at the Westgate Transport Hub where fans can be dropped off by family or friends and picked up after the game.

SANDTON TRANSPORT HUB

At different places in the Sandton area there will be pick-up and drop-off points for various transport modes.

The various modes of public transport will be converging at the Transport Hubs of Westgate and Sandton. Fans coming to Johannesburg from other South African cities and towns which are outside Gauteng will be transported, by public services, to either Westgate Transport Hub or Sandton Transport Hub.

WESTGATE TRANSPORT HUB	SANDTON TRANSPORT HUB
Modes Available	Modes Available
MetroRail	Metrobus
Rea Vaya BRT	Gautrain
Long distance buses	Buses from Lanseria
Buses from OR Tambo	

METRORAIL

To check your exact route please visit www.metrorail.co.za. Trains from the following destinations will service Soccer City (Nasrec) and Ellis Park (Doornfontein and Jeppie).

- Vereeniging
- Naledi
- Leralla
- Daveyton
- Katlehong
- Springs
- Randfontein
- Dewilt (via Pretoria)
- Mabopane
- Saulsville (via Pretoria)
- Pienaarspoort
- Pretoria
- Joburg Park Station
- Westgate

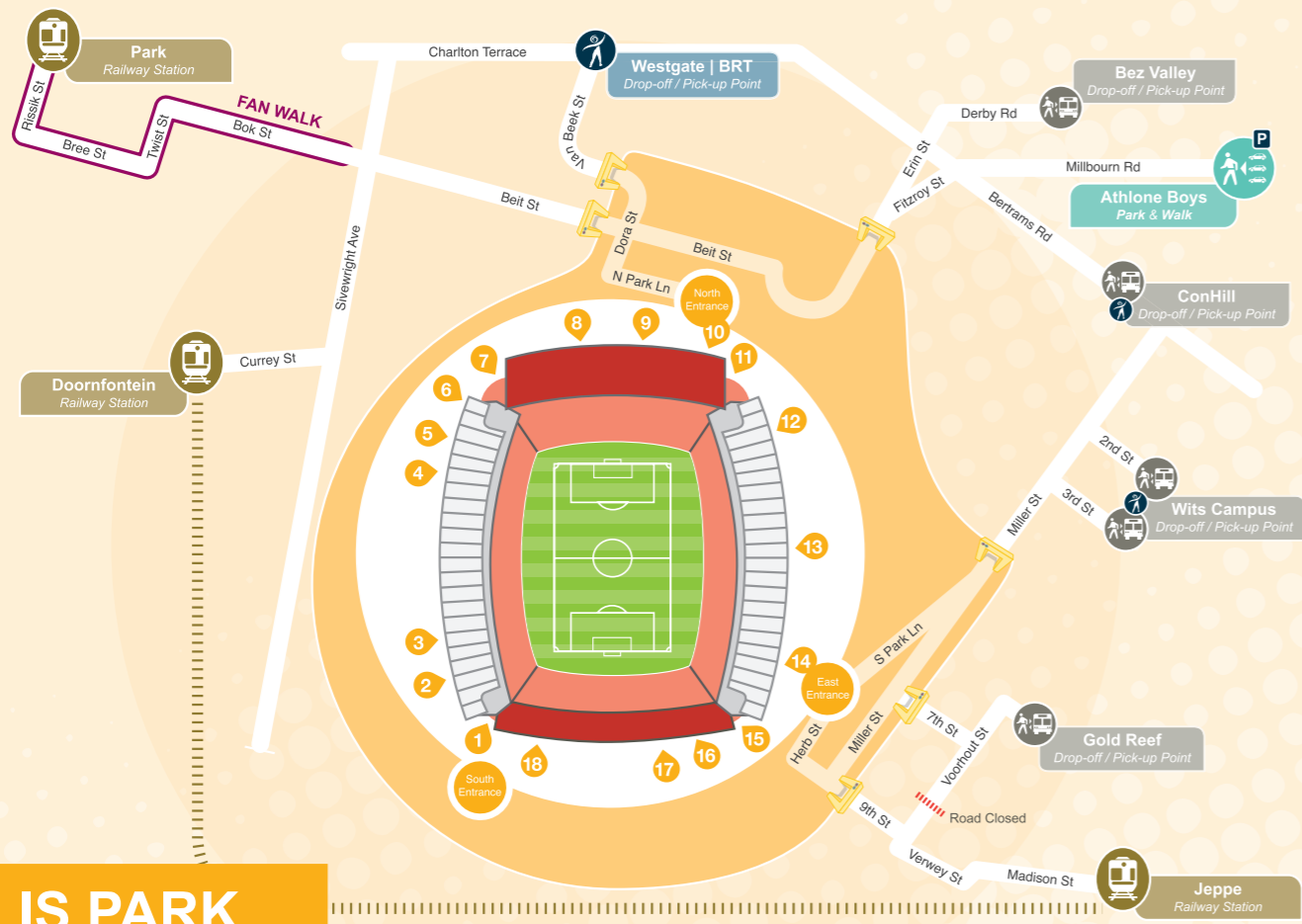
AIRPORT SERVICES

OR TAMBO International to ELLIS PARK or SOCCER CITY > Catch a shuttle directly to the Westgate Transport Hub. Thereafter use Rea Vaya BRT or MetroRail to get to the stadium.

OR TAMBO International to ELLIS PARK or SOCCER CITY via SANDTON > Catch the Gautrain to the Sandton station. On match day, use the Sandton Metrobus Transport Service to get to the Westgate Transport Hub. Thereafter use Rea Vaya BRT or MetroRail to get to the stadium.

LANSERIA to ELLIS PARK or SOCCER CITY > Catch a shuttle to the Sandton Transport Hub and use the Sandton Metrobus Transport Service to get to the Westgate Transport Hub. Thereafter use Rea Vaya BRT or MetroRail to get to the stadium.

For general information about air travel visit www.acsa.co.za or call **086 727 7888**.



ELLIS PARK WALKING ROUTES

TRANSPORT TICKETS PRICING / PURCHASING

Rea Vaya BRT R12 Return

Sandton Metrobus Transport Service

R20 One way to Westgate

R40 Return to Westgate

R50 To Westgate (including your Rea Vaya BRT connection to the stadium)

MetroRail

Free of charge to match ticket holders

Gautrain feeder buses R11

Gautrain train R100

Park & Ride From R50 per car

Park & Walk From R50 per car

Transport Ticket Costs

R50 Sedan

R100 Minibus

R300 35-40 Seater Bus

R700 64 Seater Bus

Pre-booked transport tickets will be available online at www.ticketbreak.co.za or www.computicket.com

Please note that no tickets will be sold at the venues on game days.

PARK & RIDE SIMPLE STEPS

1. Make sure that you buy your **Park & Ride** ticket prior to match day, online at www.ticketbreak.co.za and www.computicket.com

2. Drive to your **closest Park & Ride**. Follow the signage to the entrance.

3. Make sure that you have your **transport ticket, match ticket and ID** with you. No vehicle will be allowed into the area without a valid transport ticket. Please leave all prohibited items behind.

4. Take **note of the name** of your **Park & Ride** – for example **Bez Valley Park & Ride**. Park your car and walk to the designated loading area.

5. Ride to the stadium. Please **note the drop-off point**. It will be the same pick-up point after the game. Walk through your security check point called a **Mag & Bag**. Always return to the same **Mag & Bag** point when exiting the stadium.

6. **Watch your favourite team go for glory!**

7. Leave the stadium and immediately look for **directional signage** to your drop-off point. Don't walk too far beyond the precinct. You should see signage immediately after exiting the stadium.

8. **Do not rush** out of the stadium. There are sufficient buses and taxis for everyone.

9. Once you arrive at your correct drop-off point **wait patiently in the queue** for the marshal to give you instructions.

10. Return to your **Park & Ride**.

PARK & WALK SIMPLE STEPS

1. Make sure that you buy your **Park & Walk** ticket prior to match day, online at www.ticketbreak.co.za and www.computicket.com

2. Drive to your **closest Park & Walk**. Follow the signage to the entrance.

3. Make sure that you have your **transport ticket, match ticket and ID** with you. No vehicle will be allowed into the area without a valid transport ticket. Please leave all prohibited items behind.

4. Take **notice of the name** of your **Park & Walk** – for example **Aeroton Park & Walk**. Park your car and walk to the designated loading area.

5. **Follow the signs and walk** to the stadium. Please note the route taken. It will be the same route after the game. Walk through your security check point called a **Mag & Bag**. Always return to the same **Mag & Bag** point when exiting the stadium.

6. **Watch your favourite team go for glory!**

7. Leave the stadium and immediately look for **directional signage** back to your **Park & Walk**. You should see signage immediately after exiting the stadium.

8. **Do not rush** out of the stadium.

9. Follow the same route back to your **Park & Walk**.

10. Return to your vehicle and leave the **Park & Walk**.

Park & Ride

Drop-off / Pick-up Point

Park & Walk

Rea Vaya BRT

Metrobus

MetroRail

Gautrain

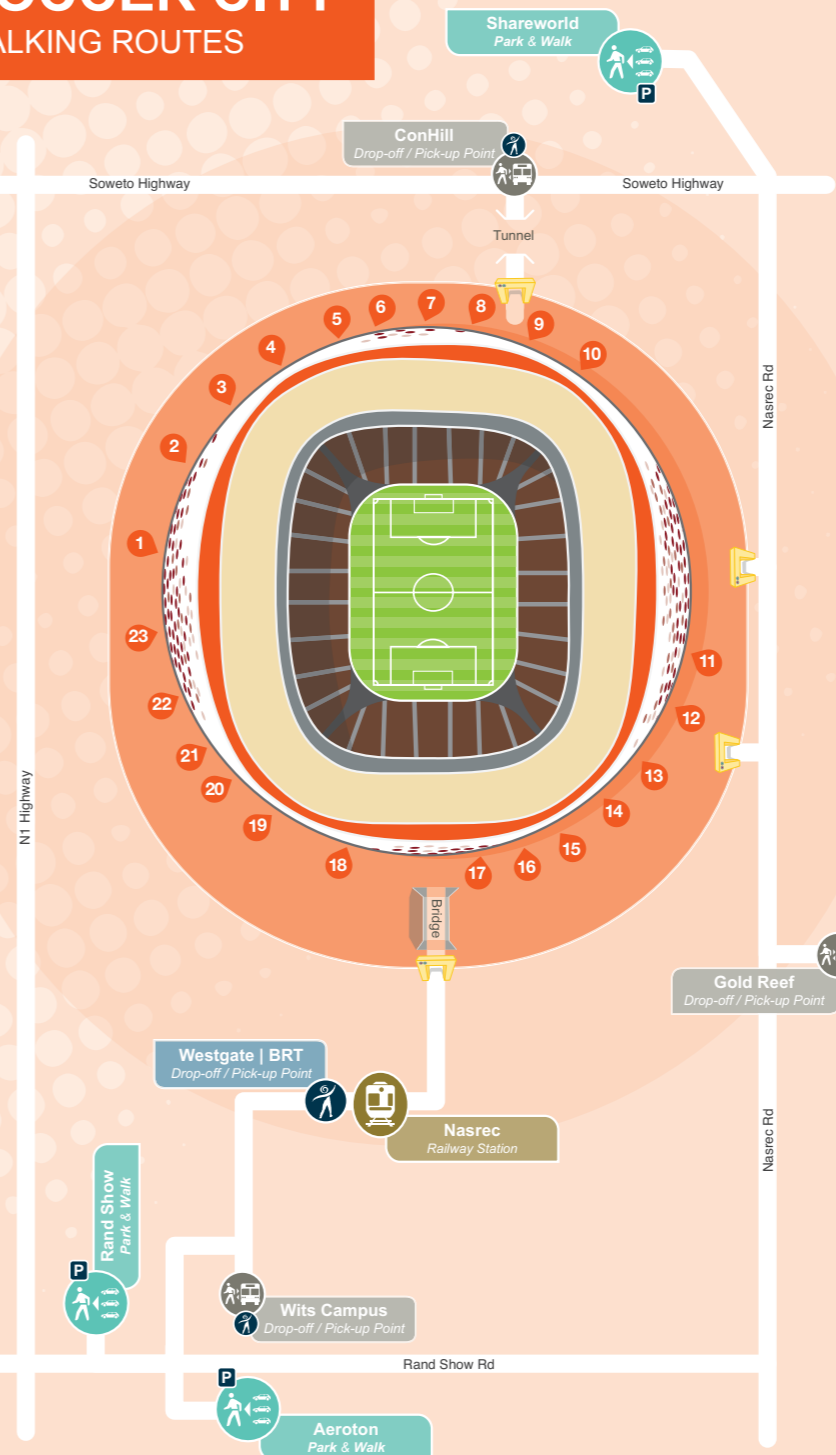
Mag & Bag

Walking Routes

Bus Routes

TRANSPORT KEY

SOCCER CITY WALKING ROUTES



CALL CENTRE & WEBSITE INFO

City of Joburg 2010 Hotline
0860 333 999
www.joburg.org.za

Joburg Connect
(Rea Vaya and Metrobus)
011 375 5555
www.joburg.org.za

MetroRail
011 773 5878
www.metrorail.co.za

Gautrain
011 759 7217
www.gautrain.co.za

National Department of Transport
nasp.dot.gov.za

Airports Company South Africa
086 727 7888
www.acsa.co.za

JOBURG 2010 FIFA WORLD CUP™ MATCH DAY TRANSPORT GUIDE

